

MINI-SWIPE AND INSERT MAGNETIC CARD READER

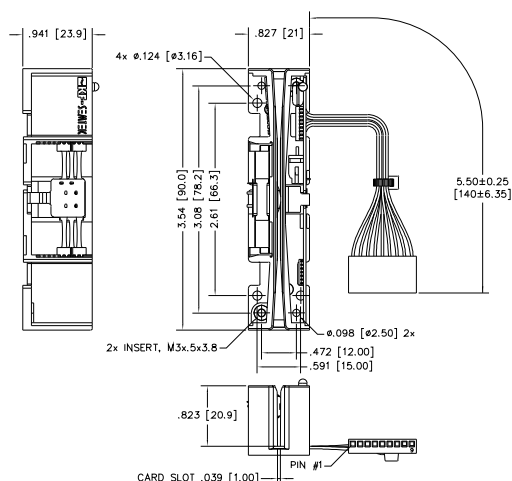
LOW COST, INDUSTRY
STANDARD CARD READERS FOR
A WIDE VARIETY OF CARD
READING APPLICATIONS

- ▶ Rugged design
- ▶ Port Powered Serial Interfaces
RS232
USB
- ▶ Available in 2 or 3 Track configurations
- ▶ Green LED to indicate Power Read Status
- ▶ Meets ISO, ANSI, AAMVA and CA DMV Standards
- ▶ Custom OEM configurations available
- ▶ Affordable solution for your application

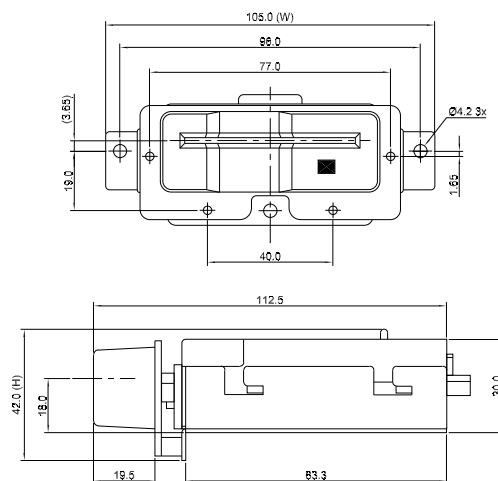


MINI-SWIPE AND INSERT MAGNETIC CARD READER

9100 & 9200 SERIES



3800 SERIES



CHARACTERISTICS FOR 9100 AND 9200 SERIES

Electrical

Output Levels:	RS232 Compatible USB (Universal Serial Bus) Compatible RS232: Connector/Cable 9 Pin D Female, Standard Length 1.5 Meters USB: Standard Length 1.5 Meters TTL: Custom Cables available
----------------	---

Environmental

Operating Temperature:	32° F to 131° F (0° C to 55° C)
Storage Temperature:	-22° F to 149° F (-30° C to 65° C)
Humidity:	Maximum 95% non-condensing

Reliability

Head Life:	Up to 1,000,000 Passes
Magnetic Read Rate:	Less than one error in 100,000 bits on cards conforming to ISO7811-5, not induced by operator error
Warranty:	One year, parts and labor

Mechanical

Card Conforms:	ISO/ ANSI, AAMVA, and CA DMV
Configurations:	Tracks 1, 2, or 3 Tracks 1 & 2 or 2 & 3 Tracks 1, 2 and 3
Card Speed:	4 to 50 IPS (inch/sec); 10 to 127 cm/sec
Card Thickness:	.020 to .040 inches, Standard

CHARACTERISTICS FOR 3800 SERIES

Electrical

Output Levels:	RS232 Compatible USB (Universal Serial Bus) Compatible TTL: Clock & Data Output (+5VDC)
----------------	---

Environmental

Operating Temperature:	32° F to 131° F (0° C to 55° C)
Storage Temperature:	-22° F to 149° F (-30° C to 65° C), non-condensing
Humidity:	Maximum 95% non-condensing

Reliability

Head Life:	Up to 500,000 Inserts
Magnetic Read Rate:	Less than one error in 100,000 bits on cards conforming to ISO7811-5, not induced by operator error
Warranty:	One year, parts and labor

Mechanical

Card Conforms:	ISO/ ANSI, AAMVA, and CA DMV
Configurations:	Tracks 1, 2, or 3 Tracks 1 & 2 or 2 & 3 Tracks 1, 2 and 3
Card Speed:	4 to 30 IPS (inch/sec); 10 to 76 cm/sec
Card Thickness:	.020 to .040 inches, Standard

DISTRIBUTED BY:



SEMTEK INNOVATIVE SOLUTIONS CORP.
4217-A Ponderosa Avenue
San Diego, California 92123 USA

TEL: 858 278.6003
FAX: 858 278.6004
EMAIL: sales@semtek.com

VISIT US AT www.semtek.com